



CRITERIA – 7.1

AY 2023-24

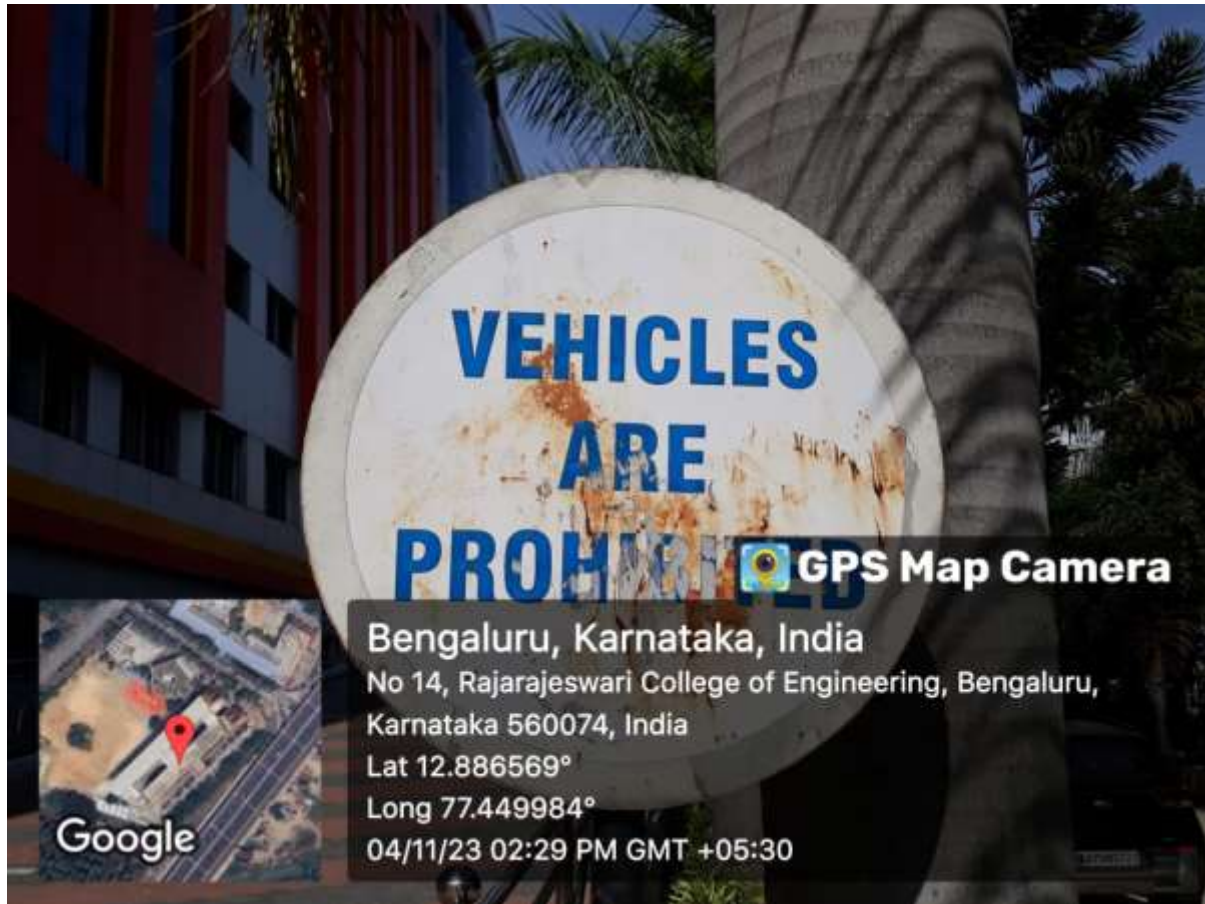
7.1.5 - Green campus initiatives include

7.1.5.1 - The institutional initiatives for greening the campus are as follows:

1. **Restricted entry of vehicles:** The College encourages the employees and students to frequently use college transport, public transport, bicycles, etc. to reduce the emissions. Each vehicle entering into the institution premises is noted down by the security person and it is checked for emission certification.
2. **Pedestrian-friendly pathways:** RRCE campus ensures Pedestrian-friendly pathways.
3. **Ban on Use of plastic:** Use of Plastic inside campus premises is prohibited.
4. **Landscaping with trees and plants:** As per the green practices in the campus, RRCE is moving in the direction of a Green Institution in Karnataka planting more trees within and outside the campus.

1. RESTRICTED ENTRY OF AUTOMOBILE

Access for vehicles within the RRCE campus is limited to a designated point. At the primary entrance of the college, a register is diligently maintained to record the vehicle numbers of all visitors. Only vehicles with a valid emission certificate are permitted to enter the campus. This adherence to emission standards ensures minimal pollution, contributing to a healthier and greener environment, ultimately mitigating the impact of global warming. To further promote sustainable transportation practices, circulars have been issued to students and staff, urging the use of public transport and the college's transportation facilities for commuting to the campus.



Photos.1: Photos showing measures taken to restrict entry of automobiles to the campus

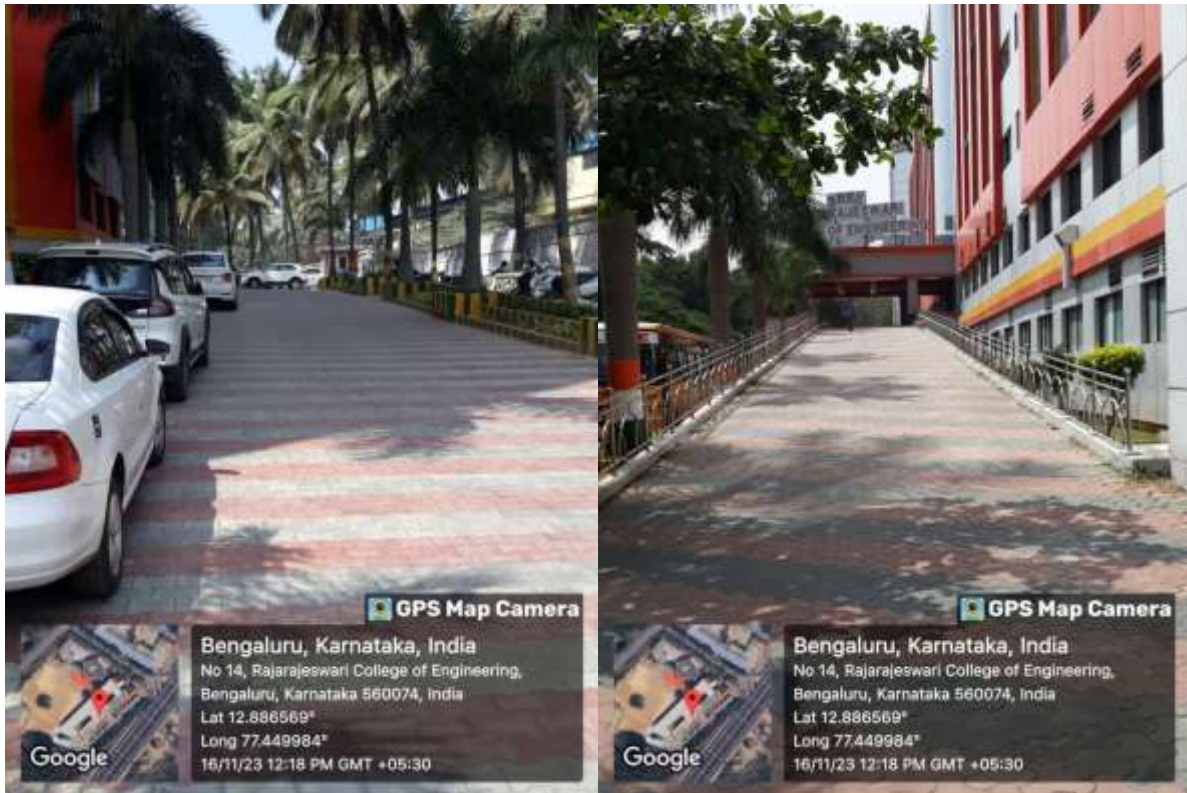
2. PEDESTRIAN FRIENDLY PATHWAYS

The campus features pedestrian-friendly pathways constructed with paved tiles to facilitate the smooth movement of students, faculty, and other staff members. These pathways are meticulously maintained regularly to ensure they remain free of mud and dust. Concrete boundaries, well-defined and painted, flank either side of the paths, enhancing both aesthetics and safety. The implementation of these pedestrian pathways prioritizes the safety and convenience of all stakeholders.



CRITERIA – 7.1

AY 2023-24



Photos.2: Pedestrian friendly pathways

3. BAN ON USE OF PLASTIC

Single-use plastic items, including bottles, bags, spoons, straws, and cups, have been completely prohibited on campus. To instill awareness among staff and students, informative sessions and display boards have been implemented across the premises. To curtail plastic usage, the canteen has replaced plastic tea cups and glasses with steel alternatives. Additionally, the college encourages the use of steel or copper water bottles in place of plastic ones, with ongoing communication to both staff and students. The institution has organized events focusing on the prohibition of plastic usage, extending awareness initiatives to faculty and local communities surrounding the campus. Circulars have been disseminated to emphasize the importance of refraining from using plastic materials within the college premises.



Photo.3: Information hand out on recycling of plastic in daily life is displayed in notice boards

4. LANDSCAPING WITH TREES AND PLANTS

Landscaping with trees and plants on a college campus involves thoughtful planning to create integrated green spaces, transforming the campus into an environment that nurtures both academic growth and personal development while benefiting the surrounding ecosystem. This approach not only adds to the campus's visual appeal but also plays a vital role in enhancing the well-being and academic experience of students, faculty, and staff alike. In sum, landscaping on a college campus offers multifaceted benefits that support academic performance, community building, environmental health, and mental well-being. These spaces help to create an inviting, sustainable, and dynamic environment that positively influences the daily lives of all campus members, fostering a supportive and enriching educational atmosphere.



Rajarajeswari College of Engineering

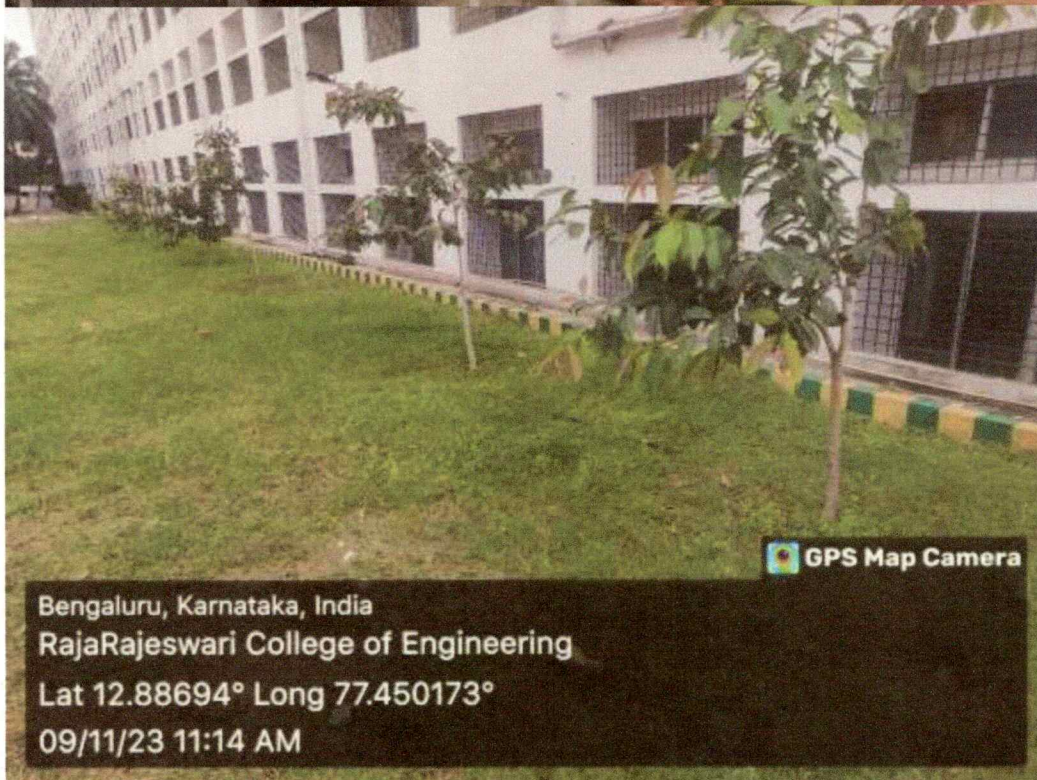
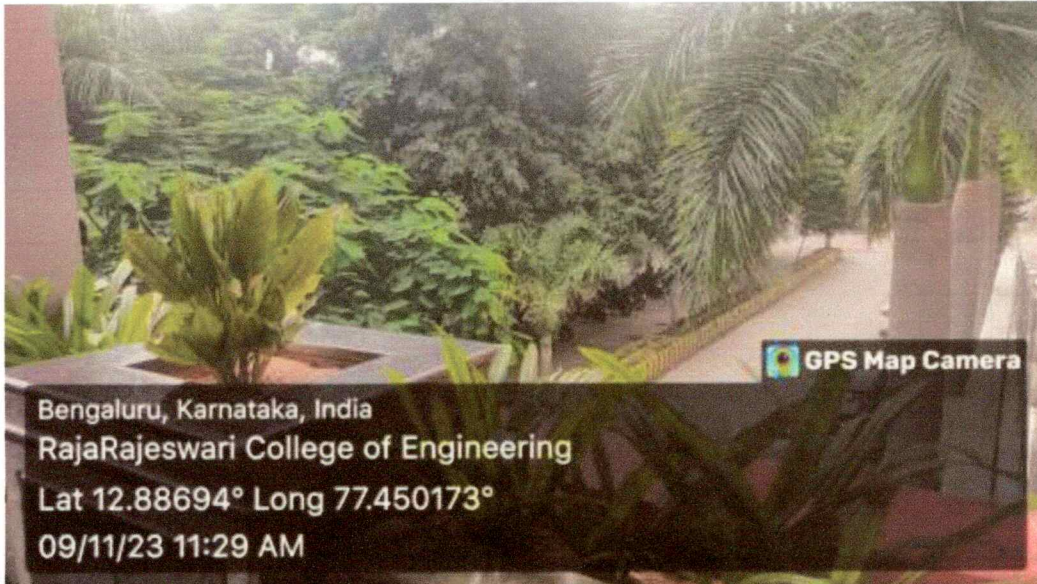


(Approved by AICTE, New Delhi, Govt. of Karnataka, Affiliated to Visvesvaraya Technological University, Belagavi)

Sponsored by: MOOGAMBIGAI CHARITABLE AND EDUCATIONAL TRUST

CRITERIA – 7.1

AY 2023-24



Photos.4: Landscaping with trees and plants within a college campus

Principal
Principal

RAJARAJESWARI

COLLEGE OF ENGINEERING

Ramohalli Cross, Bengaluru-74

Campus: #14, Ramohalli Cross, Kumbalgodu, Mysore Road, Bengaluru – 560074

Phone: +91-80-28437124 / 28437375

Email Id: principal@rrce.org

Website: <https://www.rrce.org>